

NEU Electric and Natural Gas Price Update

Electric: Short-Term Outlook

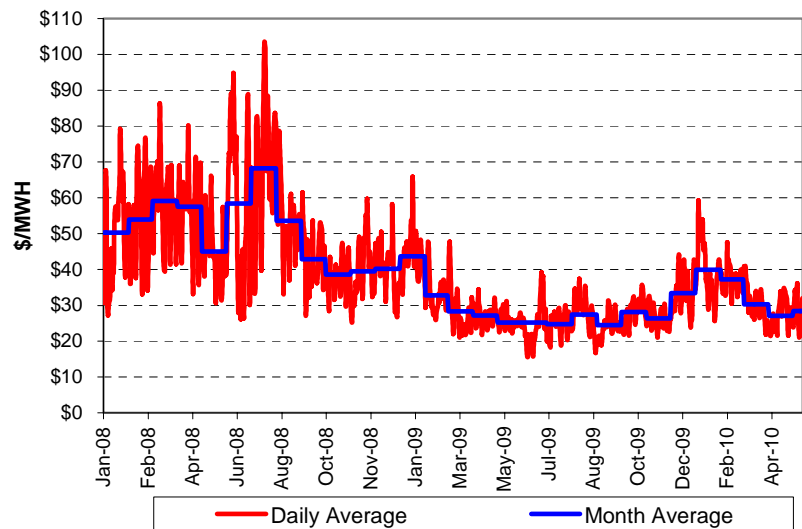
NYMEX Northern Illinois Hub forward prices for the June 2010 to May 2011 period are approximately \$30.8 per MWH (3.08¢ per kWh). Peak prices are about \$39.1 per MWH and off-peak prices are about \$23.9 per MWH. PJM Chicago Zone Day-Ahead hourly index prices in April averaged \$27.0 per MWH and Real-Time prices averaged \$26.3 per MWH. For the period May 1, 2010 through May 12 2010, ComEd Day-Ahead prices are averaging about \$28.4 per MWH. Supplier margins, distribution costs, and PJM costs (transmission, capacity, ancillary, balancing operating reserve) must be added to these costs to obtain a ComEd metered cost.

PJM Day-Ahead and Real-Time Prices ComEd Zone

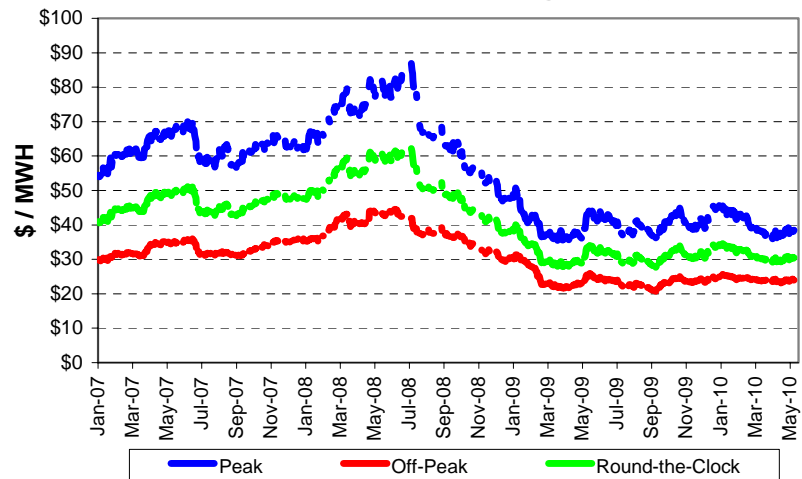
	\$ / MWH						Daily Nat Gas \$/MMBtu
	Day-Ahead LMP			Real-Time LMP			
	Mo Avg	Peak **	Off-Peak	Mo Avg	Peak *	Off-Peak	
Jan-09	\$43.63	\$50.93	\$37.63	\$42.47	\$49.47	\$36.71	\$5.59
Feb-09	\$32.82	\$38.23	\$27.90	\$33.53	\$39.72	\$27.91	\$4.48
Mar-09	\$28.35	\$34.85	\$22.49	\$26.92	\$33.45	\$21.04	\$3.54
Apr-09	\$27.21	\$32.55	\$22.10	\$27.13	\$32.62	\$21.89	\$3.36
May-09	\$25.82	\$32.66	\$20.19	\$25.97	\$33.74	\$19.57	\$3.71
Jun-09	\$24.65	\$32.54	\$17.11	\$25.72	\$34.73	\$17.09	\$3.61
Jul-09	\$24.78	\$30.61	\$19.08	\$24.99	\$29.86	\$20.22	\$3.31
Aug-09	\$27.45	\$33.30	\$22.64	\$27.81	\$34.06	\$22.66	\$3.21
Sep-09	\$24.51	\$29.60	\$20.06	\$24.65	\$29.07	\$20.78	\$3.04
Oct-09	\$28.26	\$33.67	\$23.81	\$28.02	\$33.85	\$23.22	\$4.31
Nov-09	\$26.36	\$31.82	\$22.00	\$26.55	\$31.16	\$22.88	\$3.79
Dec-09	\$33.42	\$40.02	\$27.49	\$34.86	\$42.24	\$28.23	\$5.53
Jan-10	\$39.89	\$47.33	\$34.27	\$38.52	\$46.36	\$32.59	\$5.98
Feb-10	\$37.19	\$43.23	\$31.70	\$36.84	\$42.19	\$31.98	\$5.47
Mar-10	\$30.31	\$35.89	\$24.84	\$28.77	\$35.02	\$22.64	\$4.46
Apr-10	\$26.99	\$33.84	\$20.44	\$26.28	\$34.85	\$18.09	\$4.09
Cal '08	\$50.50	\$66.24	\$36.74	\$49.38	\$65.70	\$35.11	\$8.82
Cal '09	\$28.94	\$35.06	\$23.61	\$29.05	\$35.35	\$23.55	\$3.95
Cal '10	\$33.56	\$39.78	\$28.00	\$32.55	\$39.33	\$26.48	\$4.96

* NERC Hours (6 AM TO 10 PM)

PJM Day-Ahead Prices for ComEd Zone Average of Daily Hourly Prices Through 5/10/10



NYMEX N. Illinois Hub Electric Prices 12-Month Forward Prices Through May 10, 2010 *



* ComEd prices are about \$2 per MWH higher than NI-Hub prices. Peak prices are based on NERC wholesale pricing periods (6AM to 10 PM, M-F).



NEU Electric and Natural Gas Price Update

Natural Gas: Short-Term Outlook

The Energy Information Administration ("EIA") reported in its May 11, 2010 Short-Term Energy Outlook that Henry Hub natural gas prices will average about \$4.48 per MMBtu in 2010, up \$0.04 from the the expected price of \$4.44 per MMBtu reported in its April report. The EIA expects prices in 2011 to average \$5.34 per MMBtu. Annual consumption is expected to increase by 3% in 2010 over 2009 volumes of 64.4 Bcf per day. A slight decline in consumption of 0.4% is anticipated in 2011.

The EIA continues to prediction that prices to remain low for the next few months. The lower prices will cause a decline in drilling activity over the next few months resulting in higher prices in 2011. With the lower natural gas prices, natural gas is accounting for a higher share in electric power generation. This high share is expected to continue through 2010/.

Natural gas storage on April 30, 2010 was 1,995 Bcf compared to 1,898 Bcf a year ago, and about 19% higher than the five-year average of 1,680 Bcf. Warmer than normal temperatures, along with favorable natural gas prices in March and March caused storage injections to be above injections last year and the five year average. The EIA does not expect total storage inventories to exceed last years record volume of 3,837 Bcf.

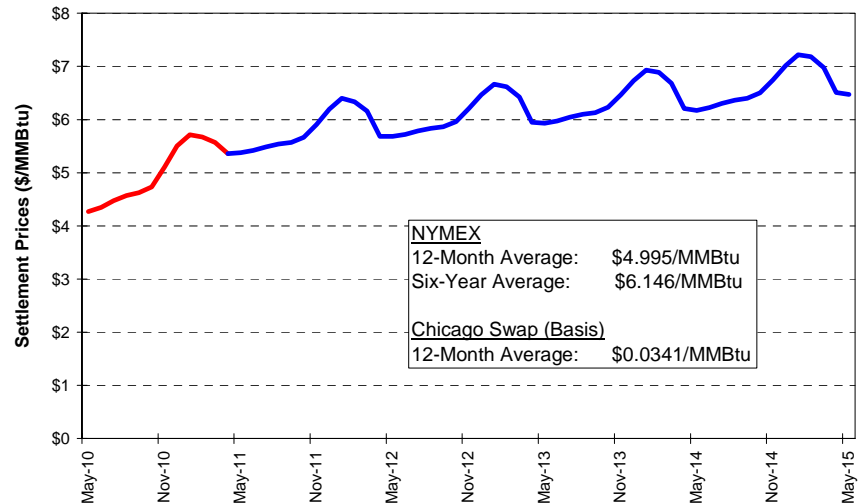
Progressive Energy Solutions reported in its April 16 price update that one of the quiet factors affecting natural gas supply and prices is the increasing supply of shale gas. The following website link provides an excellent short presentation on shale gas drilling techniques.

<http://www.pamarcellus.com/web/>

NYMEX Natural Gas Forward Prices Through May 10, 2010



NYMEX Natural Gas Settlement Prices on Last Trade Day of May 2010 Contract



NEU Electric and Natural Gas Price Update

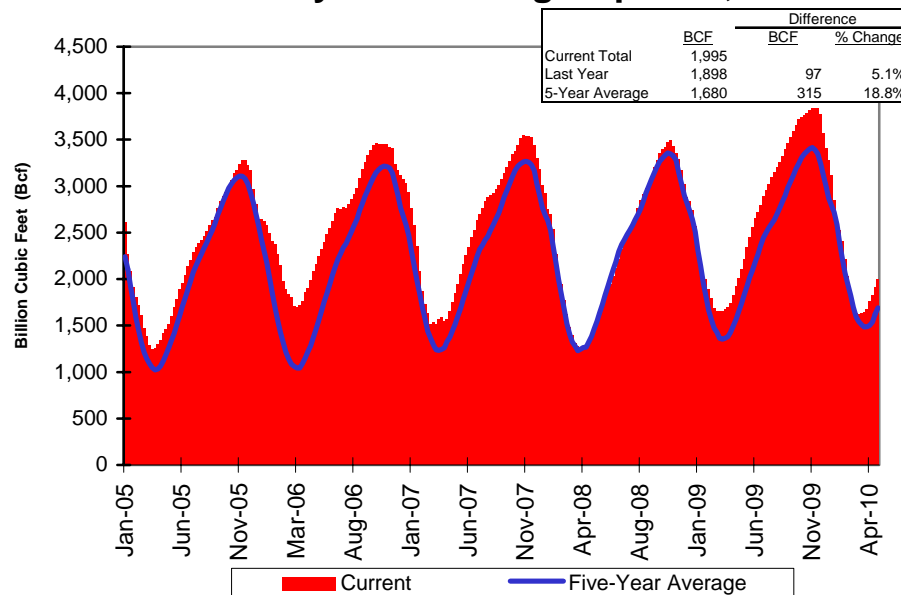
Utility Natural Gas Supply Costs – May 2010 \$ per Therm

Gas Supply Costs:	Peoples		
	Gas	North Shore	NICOR
Bundled Gas Supply Cost	\$0.4475	\$0.4509	\$0.4099
Commodity	\$0.4030	\$0.3797	\$0.3627
Non-Commodity Charge	\$0.0445	\$0.0712	\$0.0472
Demand	\$0.1953	\$0.2929	\$0.5329
Environmental Surcharges			
Rider 11, Peoples and North Shore	\$0.0052	\$0.0238	
Rider 12, NICOR - Small C&I			\$0.0026
Rider 12, NICOR - Large C&I			\$0.0005
Rider VBA - Balancing Adjustment	\$0.0084	(\$0.0571)	
Hub Service Credit	(\$0.0007)		
NICOR Transportation Service Adj.			(\$0.0010)
NICOR, Rider 5 Storage Adj. Factor			\$0.0001

Chicago citygate natural gas prices reported by Intercontinental Exchange ("ICE") for the January 2009 to May 2010 period are summarized in the adjacent table. The May 2010 index price of \$4.29 per MMBtu is \$0.29 higher than reported April 2010 index price. The May 2010 price is also \$1.18 higher than the May 2009 price of \$3.11 per MMBtu. Results continue to show a decline in the daily average price since January 2010.

ICE Natural Gas Index Prices \$ per MMBtu		
Month	Average Daily	Monthly Index
Jan-09	\$5.59	\$6.215
Feb-09	\$4.48	\$4.925
Mar-09	\$3.54	\$4.037
Apr-09	\$3.36	\$3.54
May-09	\$3.71	\$3.11
Jun-09	\$3.61	\$3.42
Jul-09	\$3.31	\$3.56
Aug-09	\$3.21	\$3.50
Sep-09	\$3.04	\$2.79
Oct-09	\$4.31	\$3.87
Nov-09	\$3.79	\$4.82
Dec-09	\$5.53	\$4.75
Jan-10	\$5.98	\$6.18
Feb-10	\$5.47	\$5.90
Mar-10	\$4.46	\$5.01
Apr-10	\$4.09	\$4.00
May-10		\$4.29

EIA Weekly Storage Report January 2007 through April 30, 2010



Natural Gas Rig Count Through May 7, 2010

